



TECHNICAL DATA

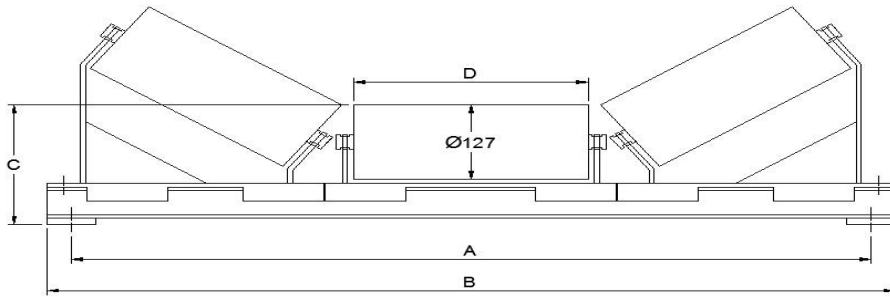
Tru-Trac Slider Trough Frame Steel Idler Dia127 (25 Series)

Doc. No: TTMQ862

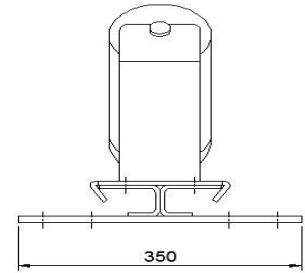
Page: 1 of 1

Rev: 0

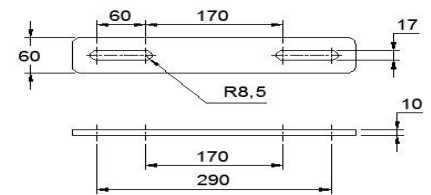
Date: 16.09.2021



FRONT VIEW



SIDE VIEW



MOUNTING DETAIL

Code	Belt width	A	B	C	D (Face Length)	Shaft Dia.	Weight (Kg)
TTSTF60GL127	600	838	898	203	240	25	28
TTSTF75GL127	750	990	1050	203	290	25	35
TTSTF80GL127	800	1090	1150	203	300	25	37
TTSTF90GL127	900	1144	1204	203	340	25	42
TTSTF105GL127	1050	1296	1356	203	390	25	48
TTSTF120GL127	1200	1448	1508	203	450	25	55
TTSTF135GL127	1350	1600	1660	203	500	25	62
TTSTF140GL127	1400	1700	1760	203	536	25	64
TTSTF150GL127	1500	1752	1812	203	560	25	69
TTSTF160GL127	1600	1904	1964	203	586	25	73
TTSTF165GL127	1650	1904	1964	203	610	25	75
TTSTF180GL127	1800	2058	2118	203	660	25	82
TTSTF200GL127	2000	2210	2270	203	740	25	92
TTSTF210GL127	2100	2362	2422	203	765	25	97
TTSTF220GL127	2200	2420	2480	203	800	25	101
TTSTF230GL127	2300	2515	2575	203	840	25	105
TTSTF240GL127	2400	2668	2728	203	870	25	111
TTSTF250GL127	2500	2770	2830	203	885	25	115
TTSTF260GL127	2600	2820	2880	203	965	25	119

Angle Is Not Adjustable

All dimensions in mm

* As Per Mine Spec OR Roller Sample

* Specify Degree Angle 25/35/45

Non standard trackers can be made to customer specifications

TRU-TRAC ROLLERS (PTY) LTD

Tel: +27 (12) 661-9531 Fax: +27 (12) 661-9489 Web Page: <http://www.tru-trac.com>

Email: info@tru-trac.com PO Box 8707 Centurion 0046