



TECHNICAL DATA

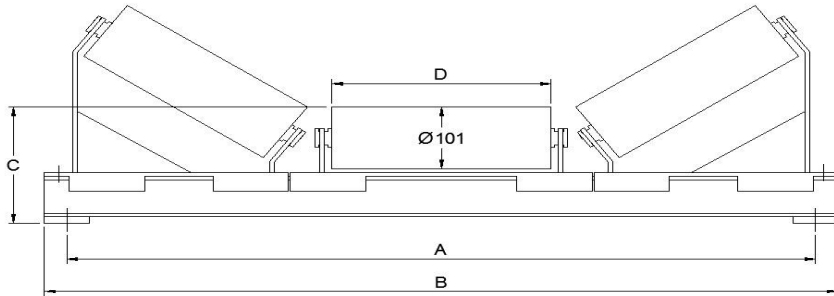
Tru-Trac Slider Trough Frame Steel Idler Dia101 (25 Series)

Doc. No: TTMQ861

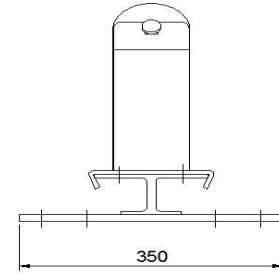
Page: 1 of 1

Rev: 0

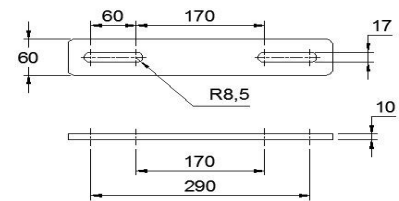
Date: 16.09.2021



FRONT VIEW



SIDE VIEW



MOUNTING DETAIL

Code	Belt width	A	B	C	D (Face Length)	Shaft Dia.	Weight (Kg)
TTSTF60GL101	600	838	898	190	240	25	28
TTSTF75GL101	750	990	1050	190	290	25	35
TTSTF80GL101	800	1090	1150	190	300	25	37
TTSTF90GL101	900	1144	1204	190	340	25	42
TTSTF105GL101	1050	1296	1356	190	390	25	48
TTSTF120GL101	1200	1448	1508	190	450	25	55
TTSTF135GL101	1350	1600	1660	190	500	25	62
TTSTF140GL101	1400	1700	1760	190	536	25	64
TTSTF150GL101	1500	1752	1812	190	560	25	69
TTSTF160GL101	1600	1904	1964	190	586	25	73
TTSTF165GL101	1650	1904	1964	190	610	25	75
TTSTF180GL101	1800	2058	2118	190	660	25	82
TTSTF200GL101	2000	2210	2270	190	740	25	92
TTSTF210GL101	2100	2362	2422	190	765	25	97
TTSTF220GL101	2200	2420	2480	190	800	25	101
TTSTF230GL101	2300	2515	2575	190	840	25	105
TTSTF240GL101	2400	2668	2728	190	870	25	111
TTSTF250GL101	2500	2770	2830	190	885	25	115
TTSTF260GL101	2600	2820	2880	190	965	25	119

Angle Is Not Adjustable

All dimensions in mm

* As Per Mine Spec OR Roller Sample

* Specify Degree Angle 25/35/45

Non standard trackers can be made to customer specifications

TRU-TRAC ROLLERS (PTY) LTD

Tel: +27 (12) 661-9531 Fax: +27 (12) 661-9489 Web Page: <http://www.tru-trac.com>

Email: info@tru-trac.com PO Box 8707 Centurion 0046