

TECHNICAL DATA

Tru-Trac Dual Return Tracker

Thrust Polyurethane 12 mm

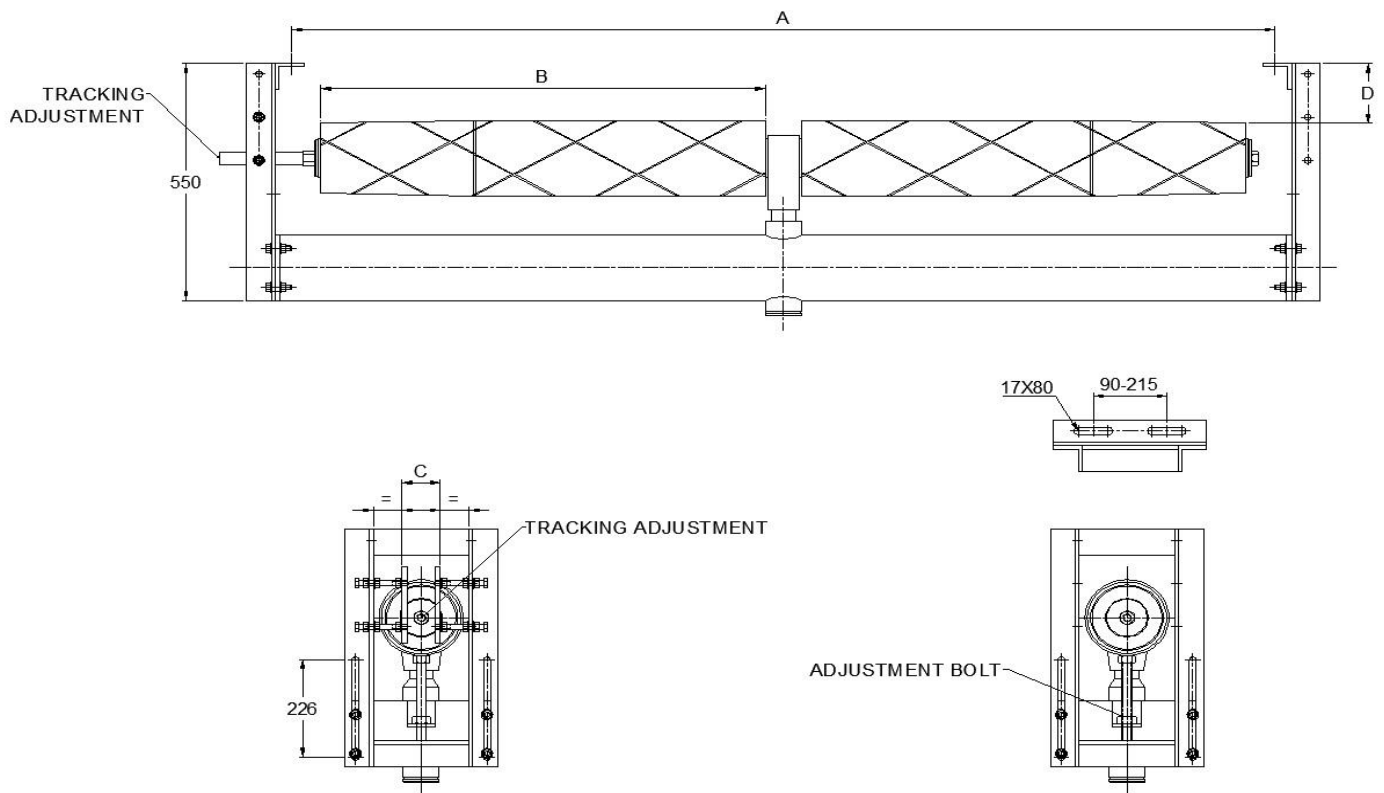
Doc. No:TTMQ18

Page: 1 of 1

Rev: 0

Date: 03.02.2017

Outside Drum Dia= 170*



Code	Belt width	A	B	C	D Min-Max	Weight (kg)
TTDR105TP12	1050	1296	550	88	15 - 130	130
TTDR120TP12	1200	1448	630	90	15 - 130	134
TTDR135TP12	1350	1600	705	92	15 - 130	138
TTDR140TP12	1400	1700	730	94	15 - 130	140
TTDR150TP12	1500	1752	780	98	15 - 130	152
TTDR160TP12	1600	1900	855	102	15 - 130	158
TTDR165TP12	1650	1900	855	104	15 - 130	158
TTDR180TP12	1800	2058	930	110	15 - 130	167
TTDR200TP12	2000	2260	1040	118	15 - 130	190
TTDR210TP12	2100	2362	1090	122	15 - 130	198
TTDR220TP12	2200	2464	1140	126	15 - 130	206
TTDR230TP12	2300	2515	1190	130	15 - 130	214
TTDR240TP12	2400	2668	1240	134	15 - 130	220
TTDR250TP12	2500	2770	1290	138	15 - 130	228
TTDR260TP12	2600	2820	1340	142	15 - 130	306

All dimensions in mm

Nonstandard trackers can be made to customer specifications

*170 dia, represents the minimum diameter, the actual dia can vary between 170 to 174

TRU-TRAC ROLLERS (PTY) LTD

Tel: +27 (12) 661-9531 Fax: +27 (12) 661-9498 Web Page: <http://www.tru-trac.com>
Email: info@tru-trac.com PO Box 8707 Centurion 0046